

EPS Duct Fabrication and Installation Sheet

EPS Cooling Duct for 2014-2016 Corvette

Parts Required for Fabrication:

Description	Quantity
Templates for EPS Duct	2
Template for Front Compartment Air Deflector	1
EPS Duct – RR BRK CLPR CLG – C6 Z06 Rear Brake Duct (PN 15842373)	1
Front Compartment Air Deflector – F/CMPT AIR – C7 (PN 23135212)	1
Tri-Fold Rivets – DIA 4.7 x 16.385 (PN 11569663)	3

Drilling Caution:

Caution: Always check scale, size and position of all templates before drilling. Failing to do so may cause damage to the vehicle, misalignment of components or the inability to install the accessory.

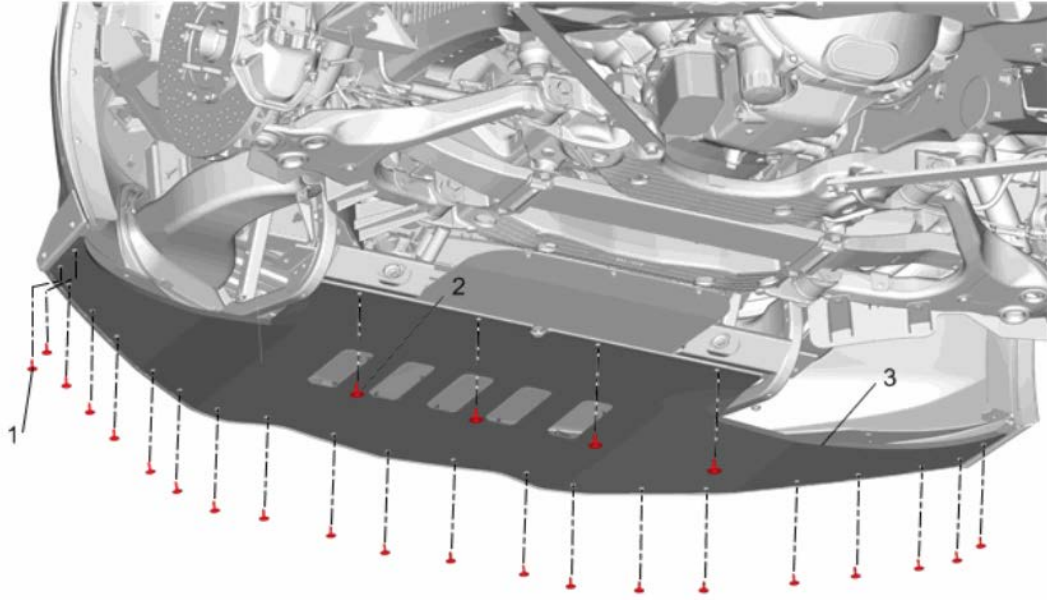
Fastener Caution:

Caution: Use the correct fastener in the correct location. Replacement fasteners must be the correct part number for that application. Do not use paints, lubricants, or corrosion inhibitors on fasteners, or fastener joint surfaces, unless specified. These coatings affect fastener torque and joint clamping force and may damage the fastener. Use the correct tightening sequence and specifications when installing fasteners in order to avoid damage to parts and systems. When using fasteners that are threaded directly into plastic, use extreme care not to strip the mating plastic part(s). Use hand tools only, and do not use any kind of impact or power tools. Fastener should be hand tightened, fully seated, and not stripped.

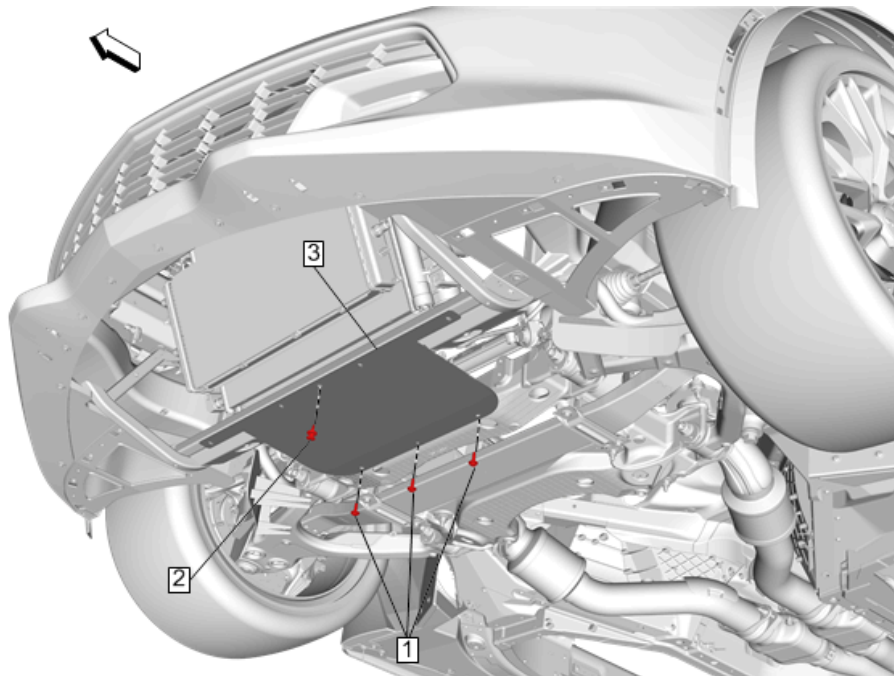
Important: This duct is *ONLY* intended for track use and should be removed after *ALL* track events.

Removal and Installation Procedures:

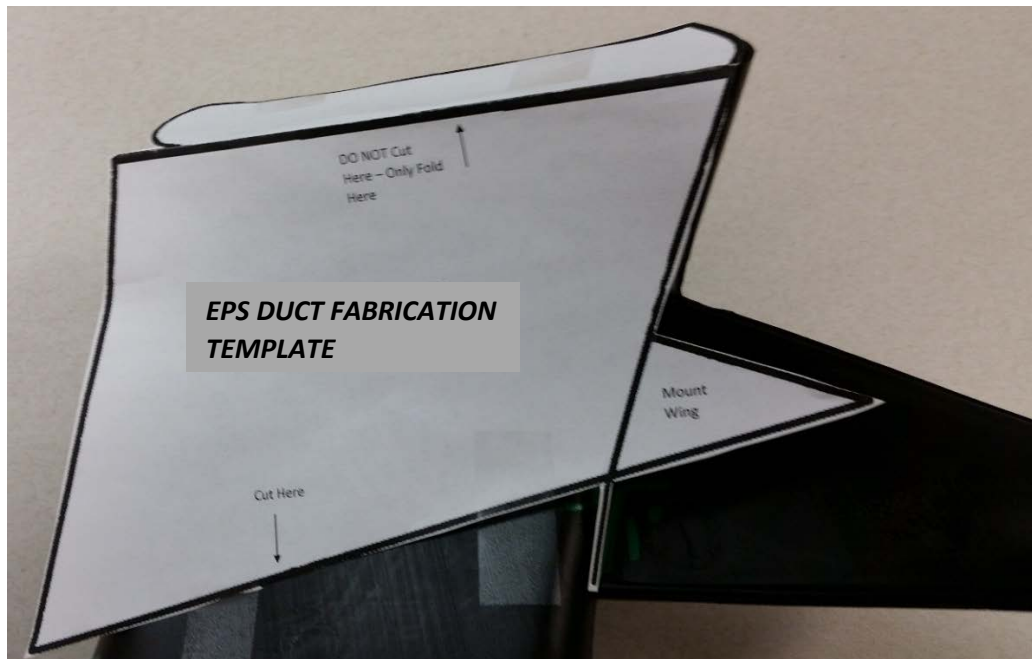
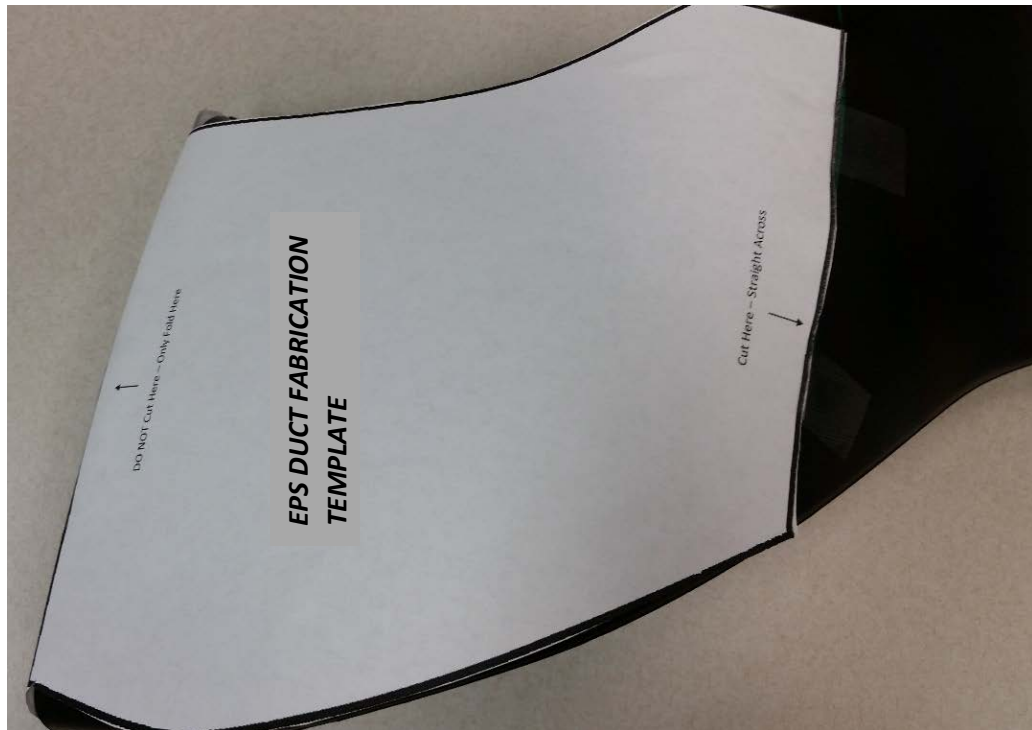
- 1.) Raise and support the vehicle. Refer to [Lifting and Jacking the Vehicle](#) on the Service Information page.
- 2.) Remove the four rear bolts of the Front Bumper Fascia Air Deflector that are shared with the Front Compartment Air Deflector. Refer to [Front Bumper Fascia Air Deflector Replacement - Center](#).



- a. Consulting the image below, perform the following:
 - i. Callout 1: Front Compartment Air Deflector Fastener (Qty: 3)
 1. **Caution:** Refer to [Fastener Caution](#)
 2. **Tighten:** 4.5 Nm (40 lb in)
 - ii. Callout 2: Front Compartment Air Deflector Push Pin Fastener
 - iii. Callout 3: Front Compartment Air Deflector
 1. **Procedure:** Move the Front Compartment Air Deflector rearward, to disengage it from the Front Bumper Fascia Air Deflector, and remove from vehicle



- 3.) Cut out templates provided in kit (two for EPS Duct and one for Front Compartment Air Deflector).
- 4.) Place the corresponding templates on the EPS Duct and secure to part with tape.
 - a. Be sure to line up correct templates on the correct side of EPS Duct. Wrap template around end of duct and line up opening hole with template.





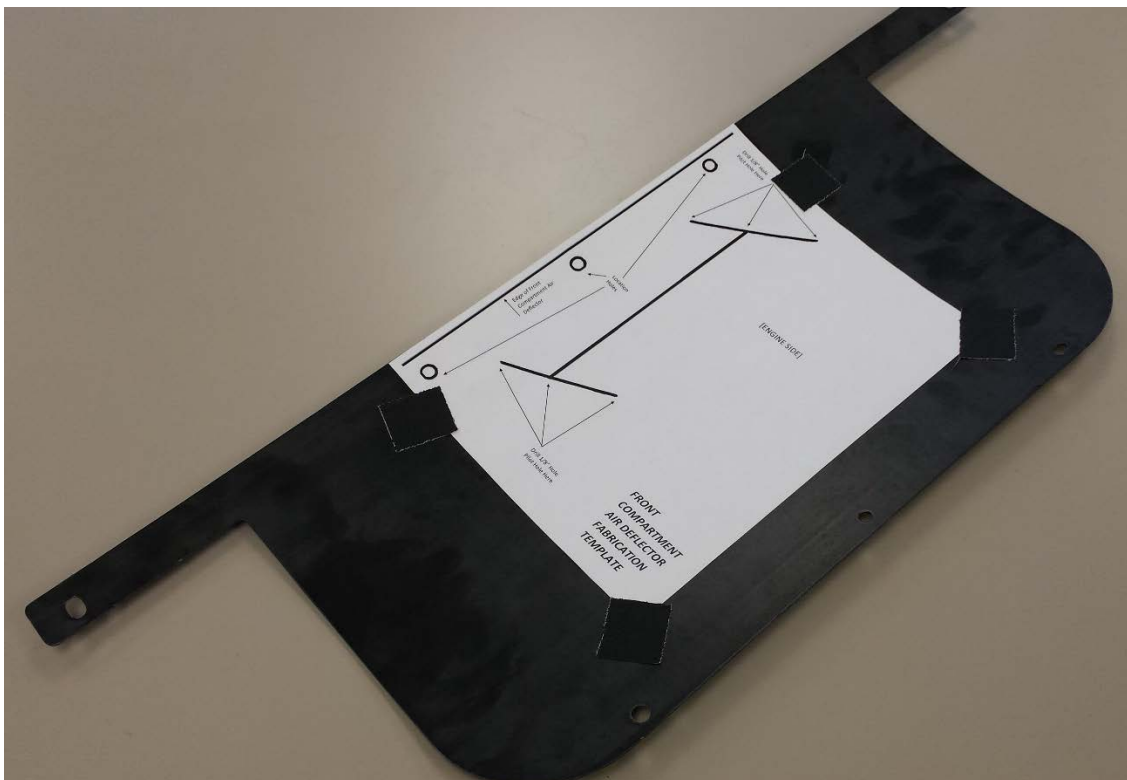
- 5.) Transfer cut lines to EPS Duct using a razor blade knife (or some sort of tool to score the surface) or a paint pen.
 - a. Pay attention to the cut lines versus fold lines, as indicated on templates. See image below.



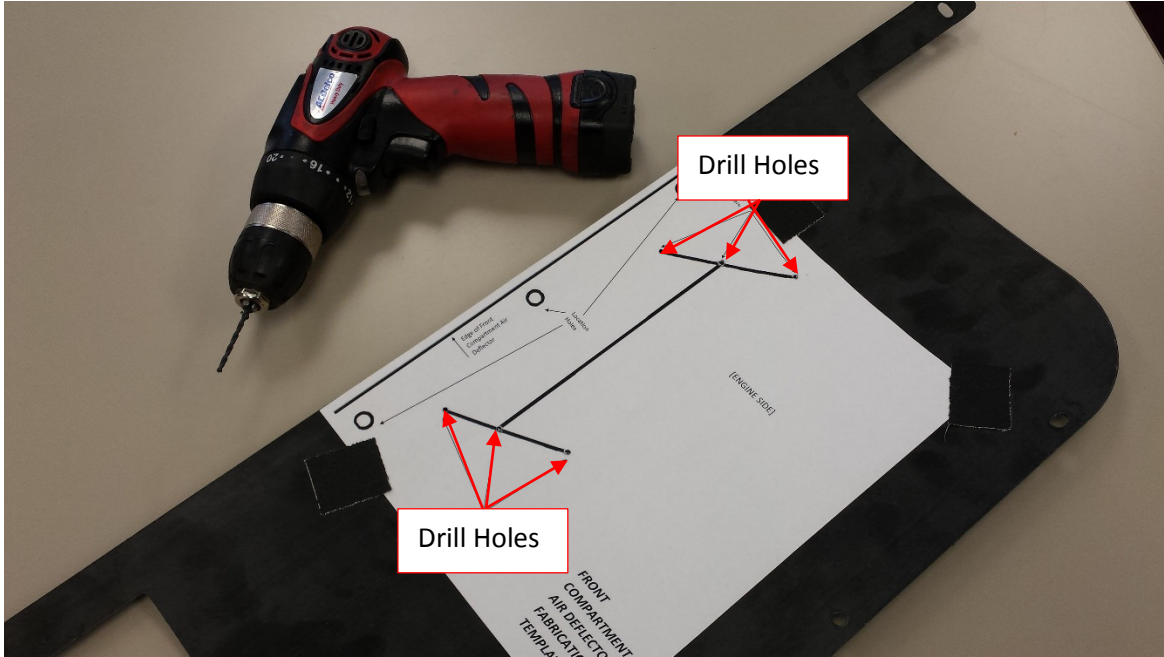
- 6.) Using a cutting tool, cut along lines transferred from templates to EPS Duct. Trim excess plastic burrs as necessary.



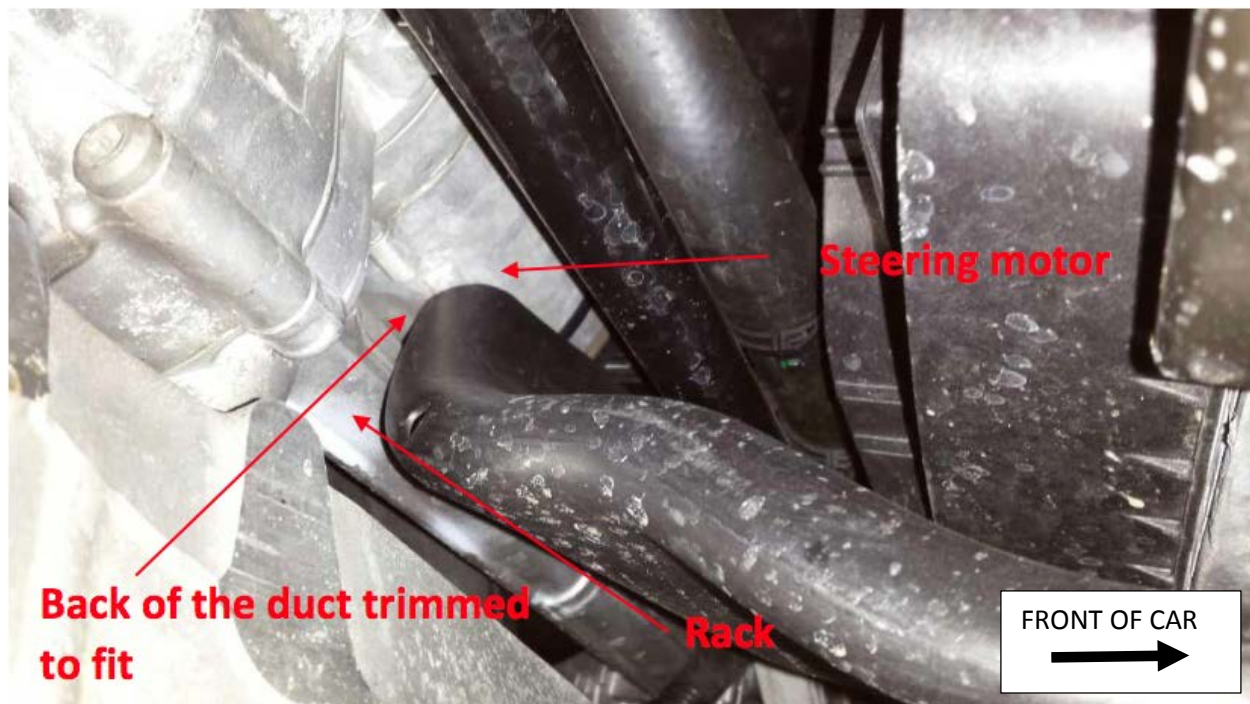
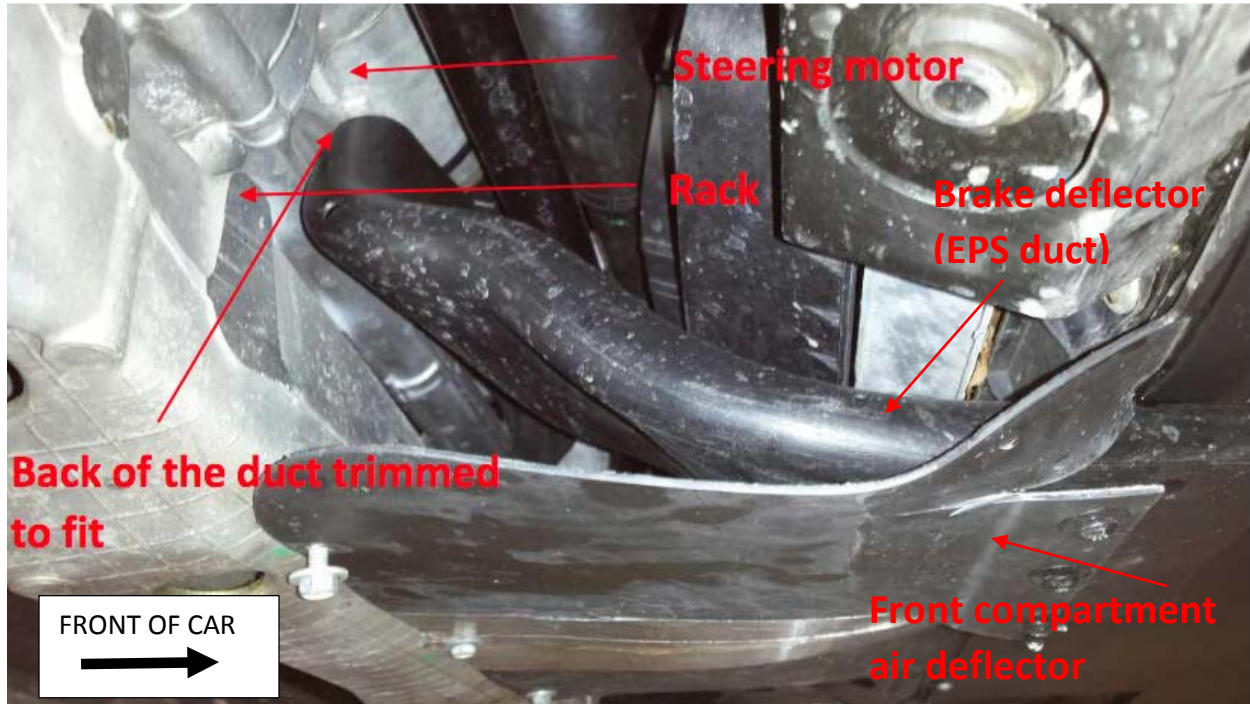
- 7.) Place the corresponding template on the Front Compartment Air Deflector and secure to part with tape.
- a. Line up location holes with holes on Front Compartment Air Deflector.
 - b. Note that some variations in parts may occur so holes might not align perfectly.



- 8.) Once the lines from the template are transferred to the Front Compartment Air Deflector, cut along these lines.
 - a. Note that the Front Compartment Air Deflector should look like a slanted "H" to make a slot (no pieces will be removed on this part). The EPS Duct will be slid into the Front Compartment Air Deflector through this slot.
- 9.) Drill holes in Front Compartment Air Deflector as marked on the corresponding template.



- 10.) Install EPS Duct in vehicle by sliding the EPS Duct through the slot of the Front Compartment Air Deflector that was cut in previous step. Trim to fit as necessary. Note that this will be an interference type of fit.





- 11.) Re-install Front Compartment Air Deflector and drill holes through the lower tab of the Front Compartment Air Deflector and EPS Duct.

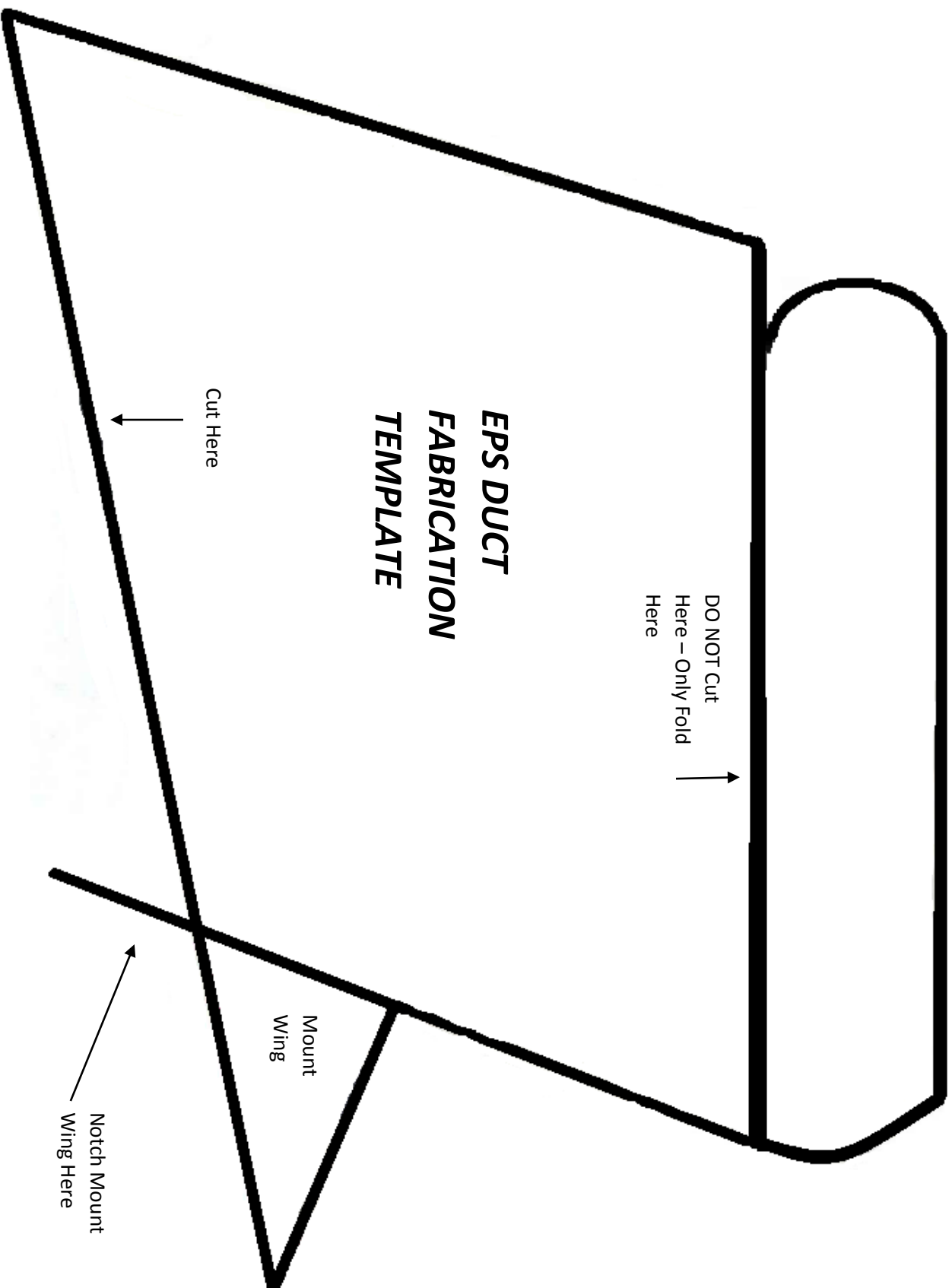


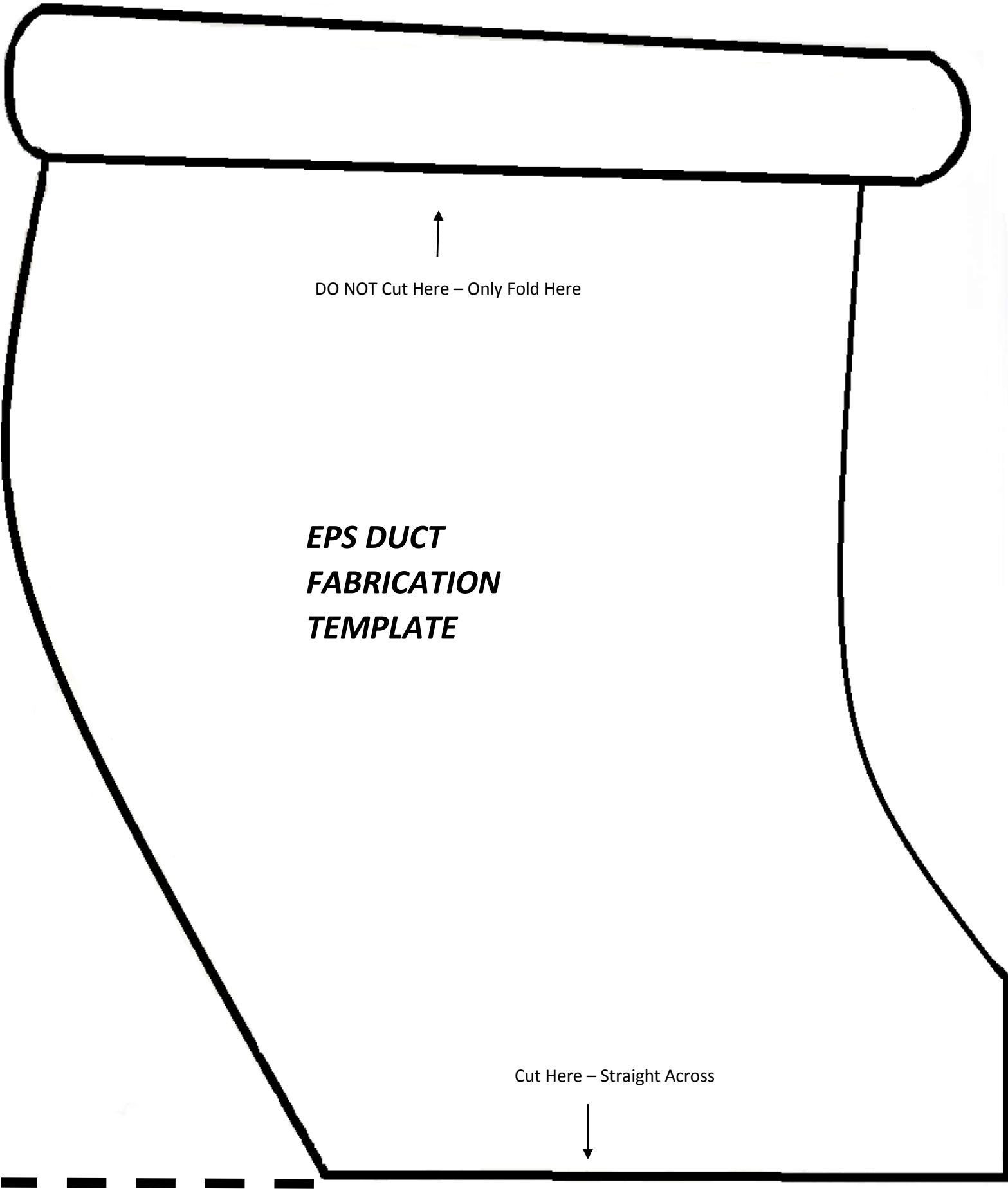
- 12.) Rivet EPS Duct to Front Compartment Air Deflector in three places using holes provided on template using tri-fold rivets (Qty: 3).

- 13.) Insert all screws into the Front Compartment Air Deflector and torque to 4.5 Nm (40 lb in).



- 14.) Remove EPS Duct after track use.



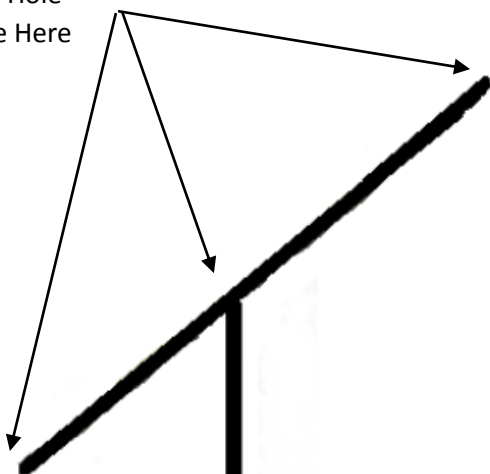


***EPS DUCT
FABRICATION
TEMPLATE***

DO NOT Cut Here – Only Fold Here

Cut Here – Straight Across

Drill 1/8" Hole
Pilot Hole Here

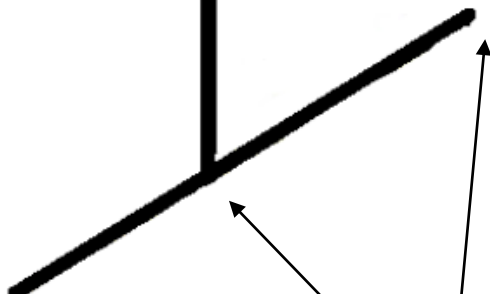


[ENGINE SIDE]

Location
Holes



Edge of Front
Compartment Air
Deflector



Drill 1/8" Hole
Pilot Hole Here



***FRONT
COMPARTMENT
AIR DEFLECTOR
FABRICATION
TEMPLATE***